



resolv

Integrated Modules & Features



resolv

Optimizing Your Distribution Network, Powered by SAP Business One

Resolv is a fully integrated suite of distribution, logistics and warehouse management software, developed for and powered by SAP Business One. Resolv is designed to optimize freight, shipping and warehouse operations to reduce operating costs, while increasing productivity, quality and revenue with integrated and mobile supply chain technologies.

Resolv is an SAP Certified Integration application for both SAP Business One on SAP HANA as well as Microsoft SQL, providing distributors the flexibility to choose their own preferred database platform.

SAP[®] Certified
SAP Business One Integration

Optimize Your Distribution Operations with Resolv

The Resolv Desktop Applications are a robust suite of distribution specific solutions, designed specifically to optimize all aspects of your distribution business – from sales and customer service to purchasing, inventory and logistics, Resolv provides an extended level of industry specific functionality, unmatched by any other application in the market.

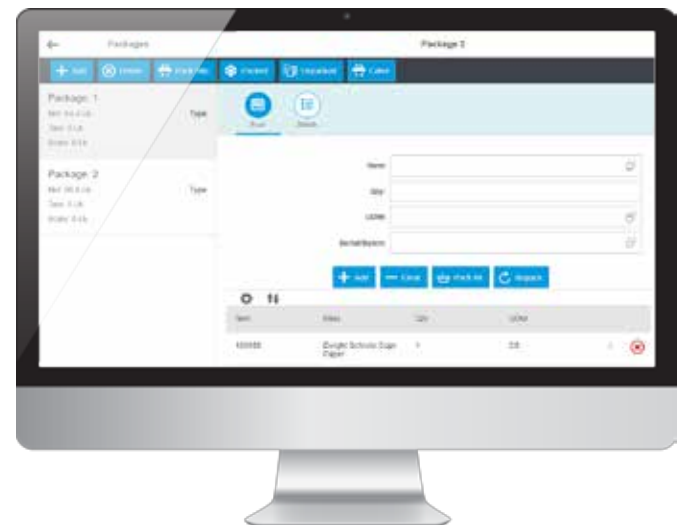
Manage Your Supply Chain from Your Mobile Device

Resolv Mobile Solutions (RMS) combines the power and performance of the SAP HANA In-Memory database with the responsive user experience of SAP Fiori, providing wholesale distributors utilizing SAP Business One for HANA an unprecedented robust and intuitive suite of warehouse management and logistics applications.

SAP® Certified
Integration with Applications on SAP HANA®

Available for Apple iOS, Windows 10 Mobile and Google Android Tablets and Smartphones, RMS will empower your warehouse and logistics employees with more real-time information, which is easier to understand and utilize than traditional handheld barcode scanners.

The world is competitive enough without having to worry about your internal operations. With the power of Resolv, your business will transform your logistics and supply chain operations from a problem to be solved into a valuable asset and competitive advantage.





Third-Party Management (3PL)

Key Functional Areas

- *FTP Connectivity*
- *Use of naming convention from integrated system*
- *No programming required for integrations*

Transactions Supported

- *Sales Order*
- *Delivery*
- *AR Invoice*
- *Purchase Order*
- *Goods Receipt PO*
- *Inventory Transfer Request*

Inventory Transfer

- *Goods Issue*
- *Goods Receipt Master Data Supported*
- *Business Partners*
- *Ship-To Addresses*
- *Item Master*

Easily Integrate with your Logistics Providers

Resolv Third-Party Management provides a quick, easy way to manage and automate the integration of Transactional and Master Data with other systems and third parties. This allows user level mapping with Third-Party Warehouses (3PL), Point of Sale Systems (POS) and any other system that is capable of XML based import and/or export.

Resolv Third-Party Management gives your company the ability to integrate your SAP Business One system with your logistics providers. This integration is a proactive tool designed to help organizations streamline transactional documents in one fluid process. Organizations have the ability to setup import and export paths for transactional document processes and can also setup notifications based on each document movement.

Document	Customer	Contact	Name	Ware	Entry Date	Request Date	Document Amount	Date Sent	
3	1032	C20000	Amanda Costner	Centerport Components	01	06/20/2017	06/20/2017	6.50	Not Sent
4	735	C20000	Def Contact ID	Centerport Components	01	12/02/2016	12/02/2016	165,000.00	Not Sent
5	736	C54010		PPG - Evansville	01	12/03/2016	01/31/2017	75,000.00	Not Sent
6	778	470000	Max Teq	Amazon	01	12/22/2016	12/22/2016	262.50	Not Sent
7	832	470000	Max Teq	Amazon	01	02/14/2017	02/14/2017	262.50	Not Sent
8	859	C20000	Def Contact ID	Centerport Components	01	03/08/2017	03/08/2017	19.50	Not Sent
9	960	470000	Max Teq	Amazon	01	05/12/2017	06/30/2008	5,625.00	Not Sent
10	962	470000	Max Teq	Amazon	01	05/15/2017	06/30/2008	5,625.00	Not Sent
11	963	470000	Max Teq	Amazon	01	05/16/2017	05/16/2017	5,625.00	Not Sent
12	964	470000	Max Teq	Amazon	01	05/16/2017	05/16/2017	5,625.00	Not Sent



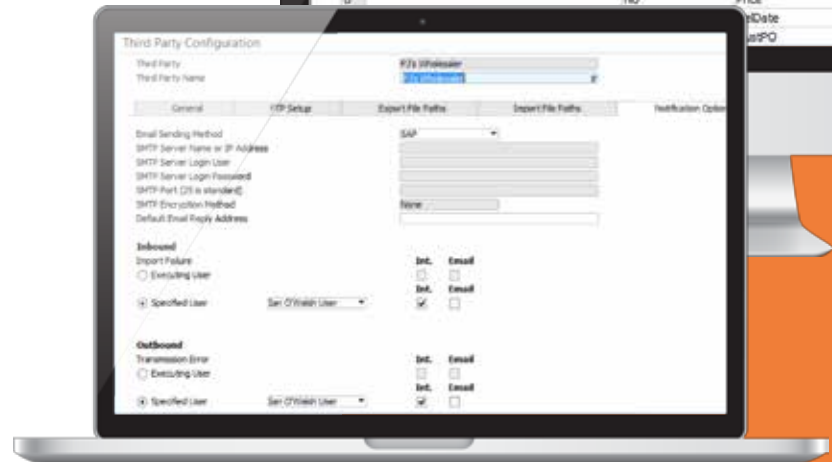
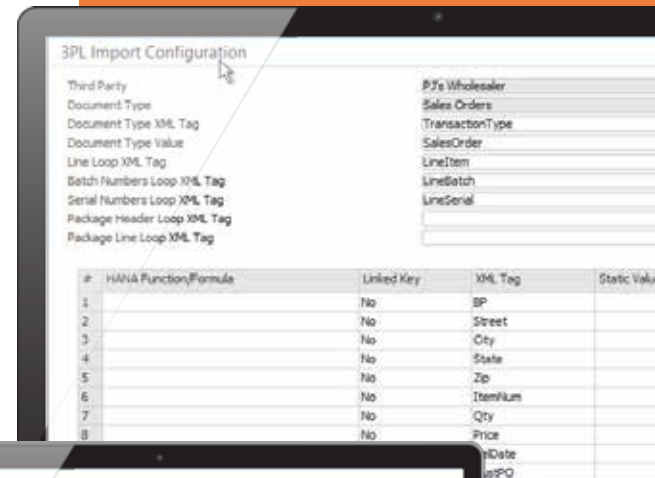
These notifications act like SAP's standard alerts, notifying the specified person of an import or export failure via an internal message or email. This feature ensures that all documents continue in the flow in the manner by which each organization set them up.

As with all Resolv modules, Third-Party Management was developed specifically for SAP Business One, utilizing the advanced technical architecture of the SAP Business One Software Development Kit.

Core Features & Functionality

The Resolv Third-Party Management has the tools required to automate the transfer of documents and master data from your SAP Business One System and your third-party providers.

- No programming to build or modify integrations
- Support data connection types such as XML, SQL, ODBC, text and more
- FTP Connectivity
- 3PL Scheduler
- SAP Business One Warehouses configured as 3PL locations
- Alerts and notifications
- 3PL Transactional archive



Resolv Desktop



AR Collections Management

Key Features

AR Collections

- *Collection Tracking Incidents*
- *Customer Payment History Tracking*
- *Customer Order-to-Cash Inquiries*
- *Sales Order Approval*
- *AR Exposure & Aging Details*
- *Dunning Letter*
- *AR Factoring*
- *Credit & Collection Reports*

Document Delivery

- *On-Demand Form Delivery*
- *Email, Fax, Print, EDI*

Customer AR Collections Master

- *Aging Totals and Drill-Down*
- *Payment History by Month*
- *Total Exposure*
- *Credit Remaining*
- *Customer Specific Credit Reports*

Key Reports

- *Collections Forecast*
- *Customer Credit Risk & Rating Reports*
- *Customer Payment Trend*
- *Call Back Report*
- *Broken Promises Report*

Documents Included

- *Quotations*
- *Sales Order*
- *Deliveries*
- *AR Invoices*
- *AR Credit Memos*
- *Statements*
- *Dunning Letters*

Streamline AR Processes to Improve Cash Flow

Resolv AR Collections Management optimizes your receivables with powerful, integrated features allowing you to follow up more efficiently, get paid sooner, and increase your cash flow. This comprehensive yet intuitive accounts receivable management tool developed for SAP Business One allows you to accelerate your order-to-cash cycle.

AR Collections Management is a proactive solution designed to help organizations streamline their credit and collection processes—resulting in a reduction of financial risk and increased cash flow.

Developed specifically for SAP Business One, AR Collections Management is easy-to-use and has numerous features to further automate the billing and payment cycle, while reducing procedural costs and increasing visibility into customer payment trends, exposure and potential credit risk.

From a single-screen credit managers and collections, staff can view all relevant credit information for a customer, including: payment history, aging detail breakdowns, total



exposure and remaining credit. From the same screen, the credit manager can then create a credit tracking document, launch any AR Collection Report for that specific customer, as well as; easily email, fax or print any SAP Business.

Core Features & Functionality

Now you can spend less time tracking down payments and streamline your AR collection processes to get paid faster with less effort. AR Collections Management streamlines the full range of AR processes and procedures to dramatically improve your cash flow and reduce risk.

- Collection Activities Screen
- Order Approvals & Holds
- AR Aging and Payment History
- Document Delivery
- AR Factor Integration
- Customer AR Collection Master
- Reports

Cash Receipts Forecast Report

Order #	Customer Name	Doc. Date	Type	Amount	Net. Due Date	Net. Payment Date
105		201706	Sales Order	113,89	201707	201707
105	Interchange Global Office (C...)	201706	Sales Order	4,099,81	201708	201708
105		201706	Sales Order	79,767,53	201708	201707
105		201706	Sales Order	138,799,33	201708	201707
105		201706	Sales Order	70,30	201707	201707
105		201706	Sales Order	4,280,06	201707	201707
105	Sales Order-Sub-C... 5.0	201706	Sales Order	371,769,71	201707	201707
105		201706	Sales Order	611,78	201707	201707
105		201706	Sales Order	869,43	201707	201707
105		201706	Sales Order	1,282,33	201708	201708
105		201706	Sales Order	4,099,81	201708	201708
105		201706	Sales Order	8	201708	201708
105		201706	Sales Order	284,51	201707	201707
105		201706	Sales Order	1,474,21	201707	201707
105		201706	Sales Order	6,288,41	201708	201708
105		201706	Sales Order	282,39	201707	201707
105		201706	Sales Order	301,50	201708	201708
105		201706	Sales Order	4,346,361,48	201708	201708

Collection Tracking

Customer: C0001
Assigned To: Manager
Priority: Medium
Status: Open

#	Type	Doc Num	SP Code	Name	Date	Due Date	Amount	Customer Ref. No.	Excluded
2	A/R Invoice	10001	C0002	Amazon	07/07/16	08/06/16	45,88	0820-01-4615-1217	
3	A/R Invoice	10004	C0002	Amazon	07/07/16	08/06/16	15,98	0820-01-4615-1489	
4	A/R Invoice	10017	C0002	Amazon	07/07/16	08/06/16	6,117,30	0820-01-4619-1111	
5	A/R Invoice	10008	C0002	Amazon	07/07/16	08/06/16	3,104,33	0820-01-4615-1108	
7	A/R Invoice								
8	A/R Invoice								
9	A/R Invoice								
10	A/R Invoice								
11	A/R Invoice								
12	A/R Invoice								

Sales Order Approval

Entered By: Timothy Warren
Sales Orders: Pending to
Approval Customer ItemCode

List of Sales Orders Based On Filter Criteria

Select	Order #	Posting Date	Customer Code	Customer Name	Entered By	Total	Cost Balance	Credit Limit
1	15293	07/19/2017	C0002	Amazon Distribution	Timothy Warren	5,344.11	15,601.66	750.00
2	15283	06/26/2017	C0002	Amazon Distribution	Timothy Warren	45.91	15,601.66	750.00
3	15280	06/16/2017	C0002	Amazon Distribution	Timothy Warren	5,086.92	15,601.66	750.00
4	15277	06/16/2017	C0002	Amazon Distribution	Timothy Warren	3,637.93	15,601.66	750.00
5	15274	05/11/2017	C0002	Amazon Distribution	Daryl Gunner	1,180.94	15,601.66	750.00
6	15226	02/17/2017	C0002	Amazon Distribution	Timothy Warren	6,174.09	15,601.66	750.00
7	15224	02/17/2017	C0002	Amazon Distribution	Timothy Warren	675.14	15,601.66	750.00
8	15195	11/26/2016	C0002	Amazon Distribution	Daryl Gunner	1,791.77	15,601.66	750.00

List of Approval Rows for Selected Sales Order

Order #	Template Name	Stage Name	Status	Approver	Approved By	Approval Date	Remarks	Last Updated	Updated Date
1	15226	Reserved Items	Operators Approval	P	manager			manager	04/06/2017
2	15226	Reserved Items	Operators Approval	P	Daryl			Daryl	04/06/2017
3	15226	Reserved Items	Operators Approval	P	tim			tim	04/06/2017
4	15226	Reserved Items	Operators Approval	P	Release			Release	04/06/2017



Resolv Desktop



Container Management

Key Benefits

AR Collections

- *Know what you have, where it is*
- *More timely order fulfillment*
- *More precise delivery dates*
- *Reduce inventory errors*
- *Improve customer service levels*

Key Tracking

Container Transit

- *Multiple PO's per container*
- *Multiple Containers per shipment*
- *Split PO line's in multiple containers*
- *Multiple statuses of transit per shipment*

Container Processing

- *Purchase order entry*
- *Container entry*
- *Pre-Payment processing*
- *Planned landed costs*
- *Container receiving*
- *Generation of PO receipts*
- *Generation of landed costs*

Container Management

- *Estimated and actual dates*
- *Container optimization by type*
- *In-Transit quantity*
- *Link files and documents to a shipment*

Landed Cost Allocation

- *Planned and actual per container*

Container Status Reports

- *By item vendor*

Efficiently Track and Manage Containers

Resolv Container Management provides the features necessary to track inventory in containers. Its robust functionality enables users to quickly and easily identify what inventory is in containers, which containers, where the container is in transit, and all the associated landed costs. Container Management is an innovative solution for SAP Business One, that provides manufacturers, distributors and third-party logistics providers, visibility and control of the inbound containers and inventory. This enhanced visibility can dramatically improve continuity and service levels across your supply-chain.

Container Management provides importers with the ability to track the contents of containers, the estimated dates of shipment, arrival at port, customs clearance and arrival at your warehouses, including; the actual dates when these events occur. With Container Management, you can link files and documents to a shipment to easily track scanned copies of shipping documents, spreadsheets, certifications or graphics. You may view or print the documents directly from the Container Tracking screen.

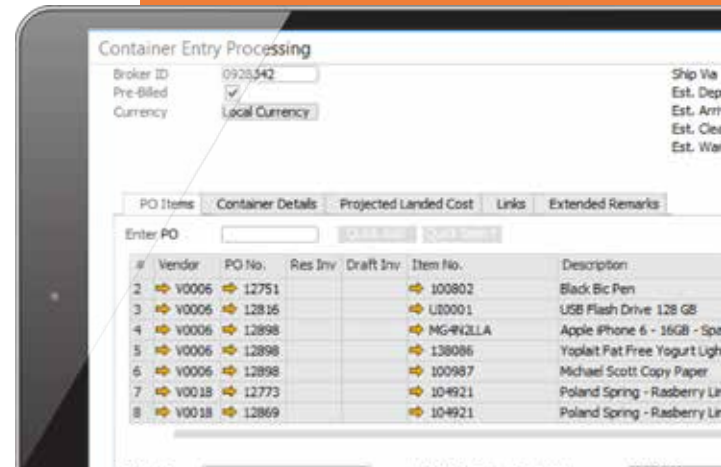


As with all Resolv modules, Container Management is built specifically for SAP Business One, utilizing the advanced technical architecture of the SAP Business One Software Development Kit.

Core Features & Functionality

The Resolv Container Management module has the specific features and functionality that enable your business to get precise information about the contents, location and status of your container-based inventory. It provides critical visibility and effective tracking of the full range of container management including:

- Container transit
- Container management
- Landed cost allocation
- Container status reports
- Container processing
- Estimated and actual
- Processing dates
- In-Transit container statuses
- Container totals



Resolv Desktop & Mobile



Resolv Data Messenger

Key Functional Areas

• Alert Notification & Document Delivery Methods

- Email – (SMTP, Outlook, SAP)
- EDI – (Resolv EDI)
- Fax – (eFax, VisiFax, SAP)
- FTP
- Print
- SAP Internal Message
- SMS
- XML

Alert Notifications

- External & Internal Recipients
 - Business Partners
 - Contact Persons
 - Email Addresses
 - SAP Users
 - Conditional Recipients
- Custom Alert Notifications based on SAP B1 Queries
- Auto Alerts generated from status changes of SAP B1 Transactions
- Attachments can be included in Word, Excel, XML or PDF format

Delivery of SAP B1 Documents

- SAP B1 - Sales, AR, Purchasing & AP Documents
- Business Partner / Contact defaults:
 - Form Template by SAP B1 Transaction
 - Delivery Method (Print, Email, Fax, SMS, FTP)
 - Auto Creation of SAP B1 Activity
 - Include PDF Attachment in SAP B1 Activity

Targeted Delivery of Information

Resolv Data Messenger is an innovative communications tool that embraces the needs and requests of today's data driven business processes. Target the delivery of information, generated from within your SAP Business One System, to your employees, customers, vendors and other partners.

Utilize Resolv Data Messenger to reduce issue response and resolution time, by creating alerts that immediately notify employees of specific matters via email. Hold vendors more accountable, by automatically emailing them of past due deliveries or short shipments. Increase customer satisfaction levels with auto generation of Order Delivery email, upon the status change of a sales order.

Automate & Streamline Delivery of Documents

The Document Delivery feature allows SAP Business One users to quickly and easily distribute key documents to customers and vendors. Documents can be distributed via email, fax, EDI or print-based on preset instructions for each contact and document.

With Document Delivery, users can save substantial amounts of time and money, while increasing customer service levels by promptly delivering the right business documents in each customer's preferred format. Document Delivery allows for documents to be distributed in one large batch, individually or based on a user-defined filtering option.

Alerts to Customers & Vendors

Embedded within SAP Business One, Resolv Data Messenger allows for the creation of dynamic and beautifully formatted messages to be sent via Text, Email, Report Delivery, even File Transfer. Messages can be sent to internal or external resources, enabling notifications to reach the right people at the right time on the right platform

Every part of the communication is customizable and can include dynamic rules, conditions as well as day & time scheduling features, providing the all answers to **The 5 W's**:

1. Who is receiving alert message?

A customer, vendor, employee or other individual that has been defined within the Alert Template within Resolv Data Messenger.

2. What will they be receiving in alert message?

Key business information, such as an invoice, statement as was defined by the initiating user of the Alert within Resolv Data Messenger.

3. When will they receive the alert message?

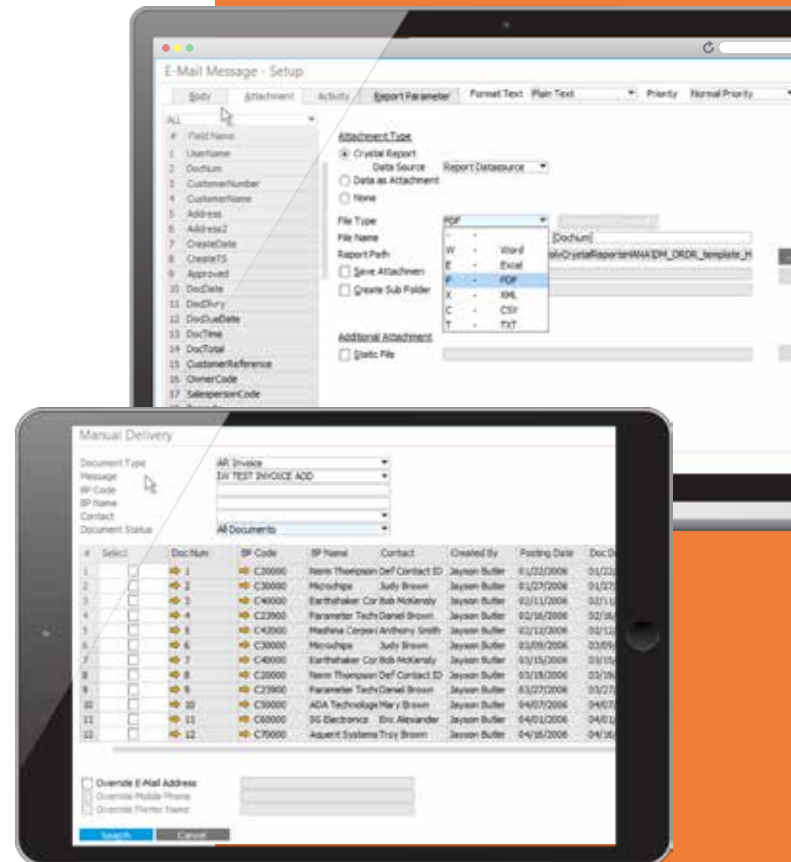
Either immediately, based on a status update (Add, Change, Delete, etc.) within SAP Business One; or based on timer set by the user within the Resolv Scheduler.

4. Where will they receive the alert message?

Recipients can receive alerts via email, print, fax, text or on an FTP site.

5. Why are they receiving this alert message?

An event within SAP Business One, that based on predefined rules within Resolv Data Messenger, has occurred that has generated to transmission of this alert to specific individual.



Resolv Desktop



Electronic Data Interchange

Benefits of EDI

Electronic Data Interchange (EDI) is the computer-to-computer exchange of business documents in a standard electronic format between business partners. By moving from a paper-based exchange of business documents to one that is electronic, businesses recognize major benefits such as reduced costs, increased processing speeds, reduced errors and improved relationships with business partners. EDI replaces postal mail, fax and email.

Embedded EDI Transactions

Resolv EDI for SAP Business One supports the following transactions:

- 753 - Request for Routing Instructions
- 754 - Routing Instructions
- 810 - Invoice
- 812 - Credit/Debit Adjustment
- 820 - Payment Order/Remittance Advice
- 846 - Inventory Inquiry/Advice
- 850 - Purchase Order
- 855 - Purchase Order Acknowledgment
- 856 - Advanced Ship Notice
- 857 - Shipment and Billing Notice
- 860 - Purchase Order Change Request
- 864 - Text Message
- 865 - Purchase Order Change
- 997 - Functional Acknowledgment
- UCC 128 Label

Move to Paperless Document Exchange with EDI

Resolv EDI is a tightly integrated solution for SAP Business One, that includes all the components needed to send and receive EDI data with your customers and vendors. Affordable and easy-to-use, yet a very robust EDI software. Achieve EDI helps automate and streamline transaction processing between your company and your trading partners. Resolv EDI users have the option to connect with their trading partner via Value Added Networks (VAN), a direct connection or through File Transfer Protocol (FTP).

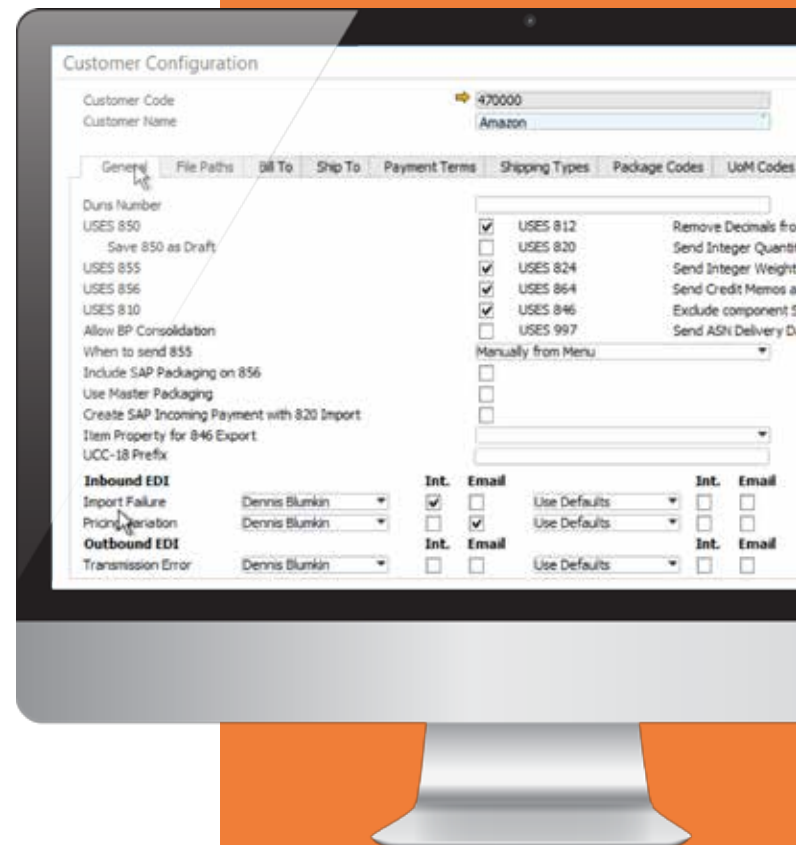
At Achieve IT Solutions, we provide our clients with outstanding and highly personalized services to support their EDI environment. As a Gold Level SAP Partner, our highly skilled development staff has a comprehensive technical and functional understanding of both SAP Business One and EDI. This combined skill set provides our clients with custom EDI transactions and mappings to meet their transactional requirements and specifications.



Core Features & Functionality

With Resolv EDI, users can increase the accuracy and efficiency involved with the input and processing of business transactions, while reducing order throughput time and related administrative costs associated to the business transaction process.

- Increase your company's competitive advantage by opening new opportunities with customers and suppliers
- Increase cash flow by reducing your invoicing, payment cycles and charge back fees
- Reduce time between sending and receiving of transactions from customers and vendors
- Provide uniform data format for customers and vendors
- Eliminate keying, re-keying and data entry errors that often occur with manual processing or other EDI systems not integrated into SAP Business One
- Streamline business processes



Resolv Desktop



Equipment Rental

Key Features

- *Rental Quotes*
- *Rental Orders*
- *Rental Returns*
- *Rental Replacements*
- *Rental Invoices*
- *Rental Service Calls*
- *Serial & Non-Serial # Rentals*
- *Rental Alerts and Reports*

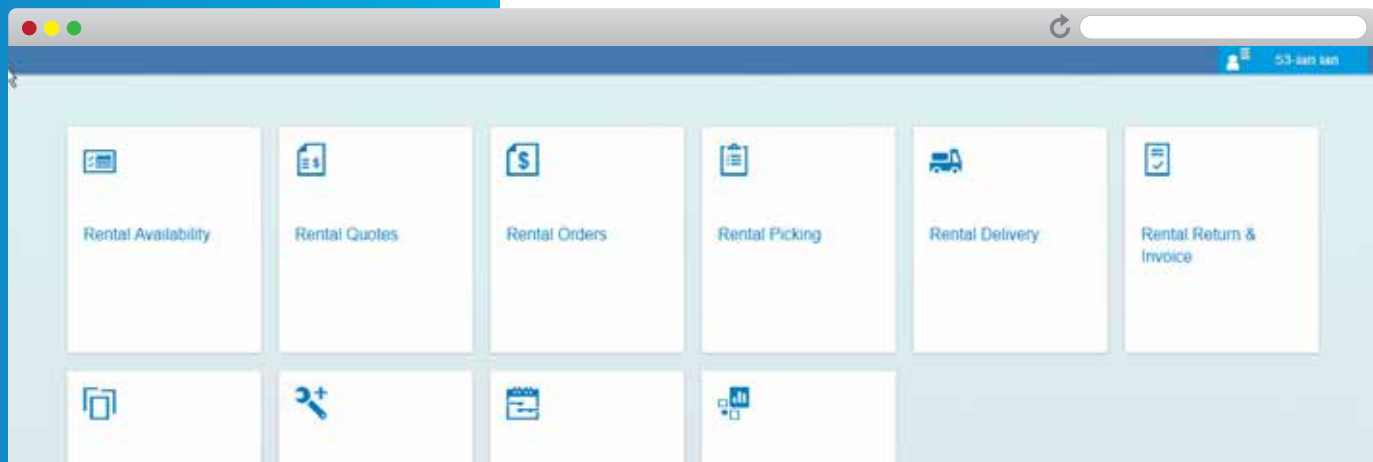
Equipment Rental Reports

- *Availability*
- *Rental Order Details*
- *Incoming Rental Items*
- *Outgoing Rental Items*
- *Rental Analysis*

Manage Your End-to-End Rental Process

Get ready to simplify and automate your equipment rental process while improving customer satisfaction. Resolv Equipment Rental is a single, integrated application, that helps organizations track and manage their rental process. The Resolv Equipment Rental module allows you to combine Equipment Rental tracking with SAP Business One Inventory Management, Sales, Purchasing and Accounting activities to deliver an enterprise-level Rental Solution.

Resolv Mobile Equipment Rental is an extension to our desktop application and provides organizations the flexibility to book and process rental transactions on their tablet or smartphone. Transaction processing time is reduced with a real-time integration with SAP Business One, increasing efficiency and customer service levels.





Core Features & Functionality

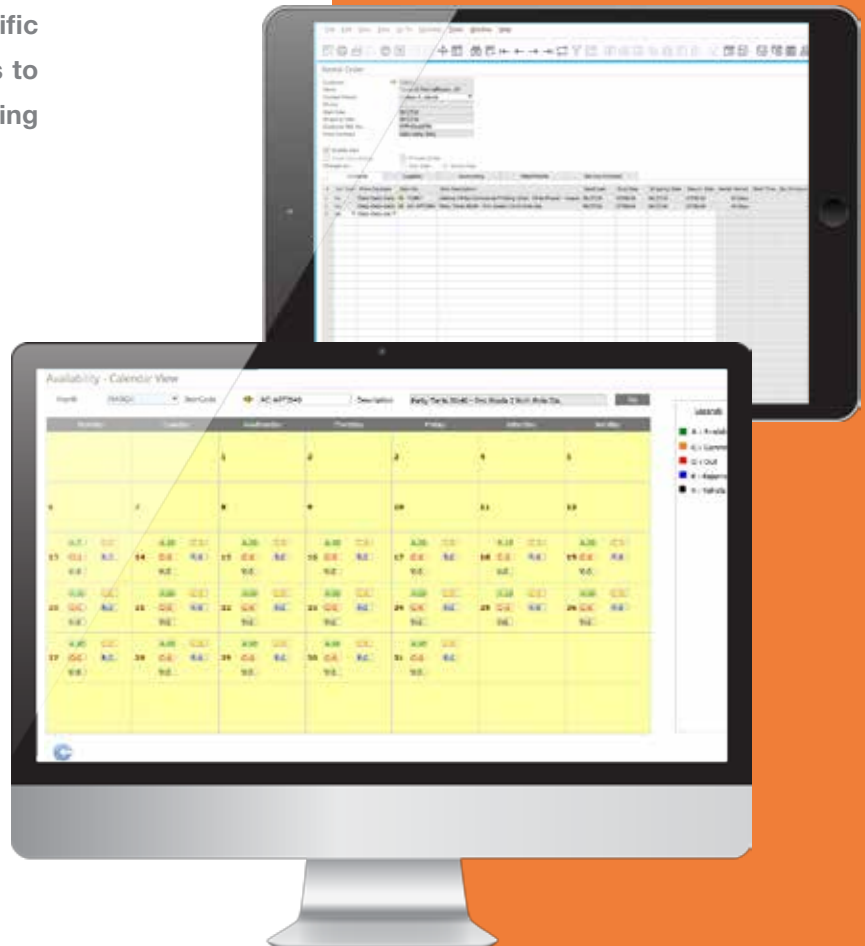
The Resolv Equipment Rental module has the specific features and functionality that enable your business to manage your rental processes more efficiently – saving your business valuable time and money.

Real Time Rental Processing includes:

- Inventory Reservations and Status
- Rental Calendar
- Multiple Rental Warehouse and Bins
- Rental Dashboard

Get Paid on Your Schedule

- Auto Invoice Wizard
- Rental Approvals
- User Defined Billing Periods and Cycles
- Pro-rated Short or Extended Calculations



Resolv Desktop & Mobile



Freight Management

Key Functional Areas

Shipping Status Tracking

- *Pending*
- *Release to pack*
- *Packed and ready to ship*
- *Shipping information requested & received*
- *Shipped*
- *Manifested*
- *Completed*

Package Entry

- *Multi package processing per shipment*
- *Standard packaging*
- *Fast pack*
- *Scan pack*
- *Fast scan for quick packing of serial and batch numbers*
- *Package view by item or package*

Carriers and Shipping System Integration

- *ABF*
- *Mail Innovations*
- *DHL*
- *Pitney Bowes*
- *Endicia*
- *UPS*
- *Estes*
- *USPS*
- *Federal Express*
- *Wards*
- *Holland*
- *XPO*

Shipping Specific Defaults By:

- *Customer & Ship-to & Contact*
- *Ship from address source*
- *Bill to Transportation, Duty, Tax*
- *Freight markup rules*
- *Delivery options*
- *Signature required*
- *Declared Value*

Integrate Seamlessly to Shipping Carriers

SAP Business One allows you to create Quotations, Sales Orders, Deliveries, and A/R Invoices. But along the way, orders have to be shipped. Many companies use separate computer systems or web services for UPS, FedEx, US Postal Service, and LTL carriers. Maintaining multiple databases for customer addresses, and entering information for each shipment is time-consuming and a likely source of errors.

The Resolv Freight Management module serves as a bridge between SAP Business One and the carrier shipping systems using Web Services to communicate to the Carriers directly inside of SAP and Resolv. The data is transmitted to the carrier's system and labels are created and printed without having to leave SAP.

Resolv Freight Management also includes a Rate Shopping feature, which allows operators to view shipping rates by various carriers and shipping options, from within the Sales Quote or Sales Order screen. This enables them to provide accurate estimates of shipping charges to customers ahead of time.

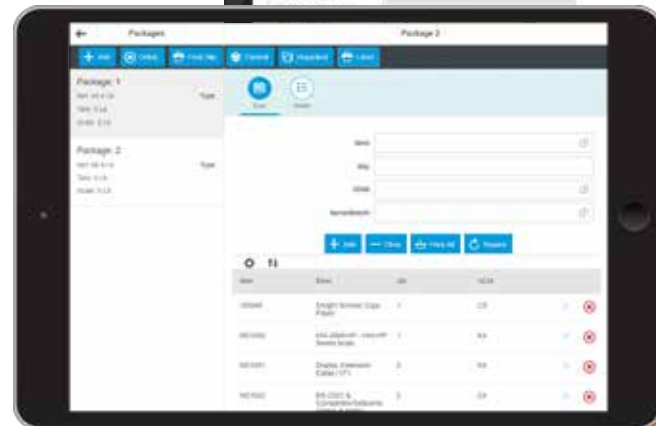
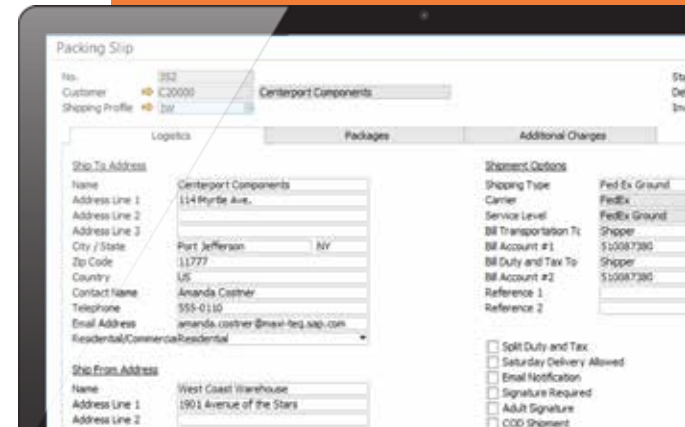


In addition, you can also purchase Resolv Freight Management Mobile which will allow users to scan pack on a web enabled handheld device or PC, utilizing SAP's Fiori interface.

Core Features & Functionality

The Resolv Freight Management module has the specific features and functionality that enable your business to connect seamlessly with different shipping carriers and includes functional areas such as:

- Manifesting
- Packaging
- Auto generation of delivery and invoice
- Freight rate quoting
- Insurance calculations
- Ten additional charge calculations per carrier, per customer
- Tracking number update
- Email shipping notification
- Customer specific shipping



Resolv Desktop & Mobile



Inventory Planning

Key Functional Areas

- *Stocking methods*
- *Safety stock calculations*
- *Track monthly usage history*
- *Track lead times for purchasing or production*
- *Track movement classes for each item by warehouse*
- *Order quantity methods by item*
- *Procurement documents*
- *Forecasting for each item by warehouse*
- *Surplus and slow stock alerts to reduce carrying costs and dead stock*
- *Multiple forecasting models for replenishment*
- *Inventory replenishment reports*
- *Historical analysis of best trends per item*

Item by Warehouse Inventory Features:

- *Monthly Usage History*
- *Lead Time Tracking*
- *Movement Classifications*
- *Min/Max Restocking*
- *Order Point/Line Point Restocking*
- *Economic Order Quantity (EOQ)*
- *Multiple Forecasting Formulas*
- *Item Ranking*

Inventory Reports

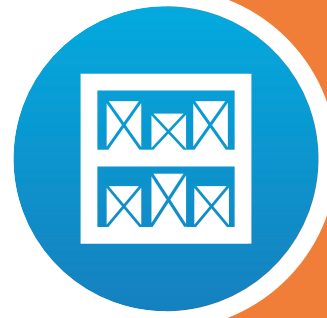
- *Demand Action*
- *Replenishment*
- *Movement Class*
- *Forecasting*
- *Safety Stock*
- *Quantity*
- *Surplus*
- *Unusual Usage*
- *Min/Max Analyzer*
- *Ranking Analyzer*

Optimize Your Inventory to Maximize Margins

A prime concern of every distribution company is to determine when to procure stock items, and how much of each one to order. SAP Business One with Resolv Inventory Planning provides three different approaches to supply-chain management. Each company may select whichever method is most useful, or different methods may be used for different groups of items or different sectors of the business.

MRP: This is the standard Business One supply management methodology. It includes the ability to include open Sales Orders, Purchase Orders, and Production Orders, as well as user-defined Forecasts to determine demand and supply over a pre-defined period of time.

Replenishment: This Resolv methodology is based on the formulas developed by Gordon Graham. It bases estimates of future demand on averages of past usage, lead times, and other factors calculated by the system.



Forecasting: This Resolv methodology is based on a set of formulas developed by Effective Inventory Management, Inc. They incorporate various trends and weighted averages along with past usage to predict demand. Forecasts are calculated by the system.

The object of Resolv Inventory Planning, in all instances, is to provide a proactive approach to procuring stock items. Rather than wait until someone notices that stock is getting low, the system establishes a procedure to determine when each item should be ordered, and the quantity to order each time.

Vendor	Vendor Name	Ware	Item	Item Name
1		01	BENL1C100	2nd Grade Curriculum
2		01	BENL1C200	3rd Grade Curriculum
3		01	BENL1C300	4th Grade Curriculum
4	V0010 Lasercom	01	ML0N2LLA	12.9-inch iPad Pro
5	V0010 Lasercom	01	MH182LLA	Pad Air 2 Wi-Fi 64GB - Gold
6	V0010 Lasercom	01	MGM2LLA	Pad Air 2 Wi-Fi 64GB - Silver
7	V0010 Lasercom	01	MQL2LLA	Pad Air 2 Wi-Fi 64GB - Space G
8	V0027 Dunder Mifflin	01	100801	Tool Belt
9	V0013 SAP Flag Factory	01	WS6400TANMD	Women's Cashmere T-Shirt Tan
10	V0027 Dunder Mifflin	01	100803	Dust Pan
	V0027 Dunder Mifflin	01	100809	Jansport - School Backpack
	V0013 SAP Flag Factory	01	WS6400NAVSM	Women's Cashmere T-Shirt Nav
	V0013 SAP Flag Factory	01	WS6400TANLG	Women's Cashmere T-Shirt Tan

Inventory Planning Configuration

Replenishment

- Use Alternate Periods
- Default Procurement Method: Buy
- Set Qualified Usage to Actual
- Number of Usage Periods (28=Needed, 999=Unlimited): 56
- Date to Start Usage Tracking: 01/01/2014
- Warehouse Transfers Usage: Do Not Track
- Default Safety Allowance: 50,000
- Default Order Quantity Method: EOQ Economic Order Quantity
- Default Restocking Method: Min/Max
- Over Minimum Percentage: 5.000
- R Cost Dollars: 5.00
- K Cost Percentage: 30.000
- Number of Lead Times to Average: 2.000
- Review Cycle in Days: 15.000
- Use Movement Class
- Default Movement Class: Movement Class 14
- Use Total Sales From: Invoices
- Resolv Processor Updates Usage
- Additional Item Information Field: LstSalDate
- Use Last Purchase Price
- Allow Users to Edit Actual Usage

Forecast



Resolv Desktop



Order Reservations

Key Features

Order Reservations for:

- *Sales Quotes*
- *Sales Orders*
- *AR Reserve Invoices*

Order Reservations by:

- *Inventory*
- *Purchase Order*
- *Warehouse Transfer*
- *Production*
- *Container*
- *AP Reserve Invoices*

Improve Fill Rates and Customer Service Levels

Resolv Order Reservations is a highly useful tool for distributors who strive to improve their customer service levels, while simultaneously improving warehouse and logistics operations. This module allows users to reserve inventory against available in-stock quantities as well as incoming Purchase Orders, Containers, Productions and Incoming Inventory Transfer Requests. This helps users better meet customer expectations and allocate inventory to specific orders to enhance fulfilment and inventory turns.

Resolv Order Reservations will also prevent deliveries from being created for items that do not have enough unreserved inventory quantities available. These reservations can be made on Sales Orders, Sales Quotes or Outgoing Inventory Transfer Requests.

Resolv Order Reservations, along with the entire suite of Resolv modules were developed specifically for SAP Business One, utilizing the advanced technical architecture of the SAP Business One Software Development Kit.



Core Features & Functionality

The Order Reservations module ensures that organizations can continue filling orders and maintaining operations while waiting for shipments to arrive at their warehouse.

- Reserve individual items
- Batch reservations
- Reserved bins
- Reservations selections from SO to inbound
- Reduce “Lost Sales” by reallocating inventory to customers

Order Reservations

Item No.: 00070391
Warehouse: NY Warehouse
Delivery Date From: To:
Prod Sales Doc No.:
Sales Doc Type: All

Allocated & Reserved Items
 Unreserved Items
 Both

In Stock & Supply Documents

Type	Document	Vendor	Order Date	Row	Deliver Date	Ordered	Open	UoM	Per Unit	In Qty	Type	In UoM	Alloc
1	SO	1079	09/01/2016	3	09/01/2016	0.00	01.000	Each	1.00	01.000	Each	0.00	01.000
2	PO	1079	09/01/2016	3	09/01/2016	0.00	01.000	Each	1.00	01.000	Each	0.00	01.000
3	SO	1079	09/01/2016	3	09/01/2016	0.00	01.000	Each	1.00	01.000	Each	0.00	01.000

Demand Documents

Type	Document	Customer	Order Date	Row	Deliver Date	Ordered	Open	UoM	Per Unit	In Qty	In UoM	Allocated	Reserved	Unreserved
1	SO	1000	09/01/2016	3	09/01/2016	1.000	1.000	Each	1.00	1.000	Each	0.00	1.000	0.000
2	SO	1000	09/01/2016	3	09/01/2016	1.000	1.000	Each	1.00	1.000	Each	0.00	1.000	0.000
3	SO	1000	09/01/2016	3	09/01/2016	1.000	1.000	Each	1.00	1.000	Each	0.00	1.000	0.000
4	SO	1000	09/01/2016	3	09/01/2016	1.000	1.000	Each	1.00	1.000	Each	0.00	1.000	0.000
5	SO	1000	09/01/2016	3	09/01/2016	1.000	1.000	Each	1.00	1.000	Each	0.00	1.000	0.000
6	SO	1000	09/01/2016	3	09/01/2016	1.000	1.000	Each	1.00	1.000	Each	0.00	1.000	0.000
7	SO	1000	09/01/2016	3	09/01/2016	1.000	1.000	Each	1.00	1.000	Each	0.00	1.000	0.000
8	SO	1000	09/01/2016	3	09/01/2016	1.000	1.000	Each	1.00	1.000	Each	0.00	1.000	0.000
9	SO	1000	09/01/2016	3	09/01/2016	1.000	1.000	Each	1.00	1.000	Each	0.00	1.000	0.000
10	SO	1000	09/01/2016	3	09/01/2016	1.000	1.000	Each	1.00	1.000	Each	0.00	1.000	0.000
11	SO	1000	09/01/2016	3	09/01/2016	1.000	1.000	Each	1.00	1.000	Each	0.00	1.000	0.000

Order Reservations

Item No.: 000988
Warehouse: NY Warehouse
Delivery Date From: To:
Prod Sales Doc No.:
Sales Doc Type: All

Allocated & Reserved Items
 Unreserved Items
 Both

In Stock & Supply Documents

Type	Document	Vendor	Order Date	Row	Deliver Date	Ordered	Open	UoM	Per Unit	In Qty	In UoM	Allocated	Reserved	Unreserved
3	PO	12676	06/30/2016	1	06/30/2016	20.000	30.500	Case	1.00	20.000	Case	1.00	0.000	30.000

Demand Documents

Type	Document	Customer	Order Date	Row	Deliver Date	Ordered	Open	UoM	Per Unit	In Qty	In UoM	Allocated	Reserved	Unreserved
1	SI	14990	06/30/2016	1	06/30/2016	21.000	21.000	Case	1.00	21.000	Case	0.00	0.00	21.000
2	SI	14988	06/30/2016	1	06/30/2016	15.000	15.000	Case	1.00	15.000	Case	0.00	0.00	15.000
3	SI	14996	06/30/2016	1	06/30/2016	30.000	30.000	Case	1.00	30.000	Case	0.00	0.00	30.000
4	SO	14996	06/30/2016	1	06/30/2016	15.000	15.000	Case	1.00	15.000	Case	0.00	0.00	15.000
5	SO	14994	06/30/2016	1	06/30/2016	30.000	30.000	Case	1.00	30.000	Case	0.00	0.00	30.000
6	SO	14992	06/30/2016	1	06/30/2016	30.000	30.000	Case	1.00	30.000	Case	0.00	0.00	30.000
7	SO	13000	06/30/2016	1	06/30/2016	100.000	100.000	Case	1.00	100.000	Case	0.00	0.00	100.000

Order Reservation Configuration

Auto Reserve Quotes

Auto Reserve Full Quantity on Update

Auto Reserve Sales Orders

Auto Reserve Full Quantity on Update

Back Order Due Date

Delayed Supply Updates Demand Due Dates

Transit Time in Days

Production PO UDF

Reduce Avail Reservations by Picked and Released Qty

Reserved Qty

Buttons: OK, Cancel, Sales Quotations, Sales Orders, Reserve



Resolv Desktop



Order-To-Cash (OTC)

Improve Order-to-Cash Workflows

Order-to-Cash (OTC) Optimizes the order-to-cash workflow for companies utilizing SAP Business One. This module connects all aspects of the entire order-to-cash cycle including order processing, credit checking, fulfillment, shipping, document management, invoicing and reporting are streamlined with OTC. Utilizing OTC within your SAP Business One System, your company can dramatically improve customer service levels, profits and organizational efficiencies while freeing up working capital and cash flow.

Other similar solutions on the market are actually several individual software applications bundled together and promoted as a single 'solution pack'. However, this bolt-on approach often leads to gaps in functionality, support challenges and often finger-pointing between the vendors and customers.

Resolv OTC is developed and supported by the Achieve IT Solutions team. This single-source approach provides SAP Business One customers and partners, one organization that is dedicated to the successful development and support of OTC.

Core Features & Functionality

The OTC module provides users with comprehensive functionality allowing them to optimize operations across their business including areas such as:

- Customer Inquiry
- Vendor Inquiry
- Inventory Inquiry
- WMS Inquiry
- Sales and Purchasing Analysis
- Order Pad

Customer Inquiry – Offers an overview of all the SAP Documents and Activity that can be associated with customers. Users can drill down to details of all transactions. This is a powerful tool that can be used as an analytic review, or a customer service launch pad.

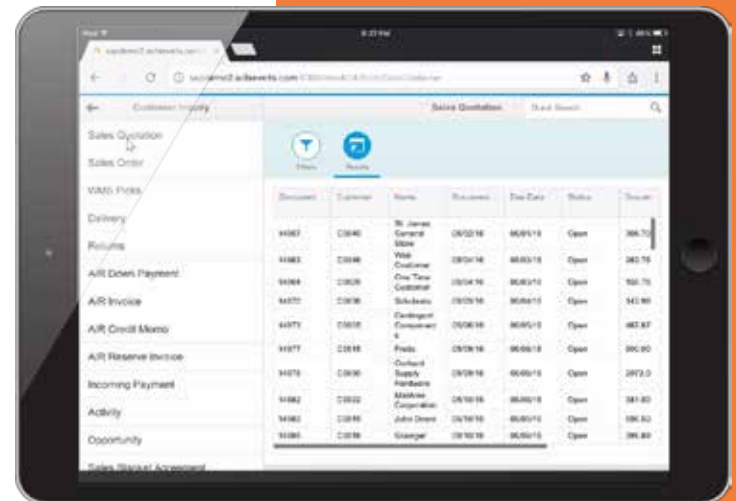
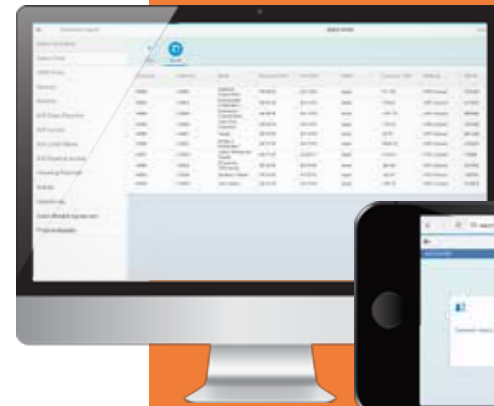
Vendor Inquiry – Offers an overview of all the SAP Documents and Activity that can be associated with Vendors. This inquiry has the same capabilities as the Customer Inquiry but is targeting uses that manage or work with inbound documents and vendor relationships.



Item Inquiry – Offers Procurement, Warehouse, and Logistics Managers with a centralized starting point to oversee all the inputs that impact their functions. This inquiry has the same capabilities as the Customer Inquiry but is organized with an Item centric view, rather than a Business Partner view. This actually provides more information as the functionality extends to both Sales and Purchasing, in addition to adding Inventory and Production data.

WMS Inquiry – Offers a real-time view into the warehouse, providing users the ability to see the status of sales, purchasing, inventory and production transactions as they are being processed within Resolv WMS.

Sales & Purchasing Analysis – Provides users with comprehensive multilevel sales analysis data by Customer, Item and Salesperson. Additional purchasing analysis data is available by Vendor and Item. The data can be filtered to quick give insight into Sales, Costs, Profitability and trends over time. This can be very broad, covering the entire operations of the company, or can be narrowed to lower levels, such as the specific performance of a Salesperson by Manufacturer in a given state by Item Category.



Resolv Desktop & Mobile



Quality Control

Key Features

Quality Control is applicable on the following screens:

- *GRPO*
- *Receipt from Production*
- *Good Receipt*
- *Sales Return*
- *Inventory Transfer*

Setup and Configuration

- *Quality Control Configuration*
- *Parameter definition*
- *Parameter mapping*
- *Rejection reason*
- *Testing Tools*

Quality Control Processing

- *Pending Inspection*
- *Pending Disposition*

Reports

- *Inspection Conforming*
- *Inspection Non-Conforming*

Monitor Quality to Improve Profitability

Resolv Quality Control will help transform your quality management processes into a collaborative environment for continual improvement and enhanced operations. The Resolv Quality Control module provides the ability to track quality throughout your facility, allowing you to make operational and procedural adjustments when and where needed. This valuable information and insight allows you to maximize profitability while improving customer satisfaction.

This module allows you to track and check quality on the basis of quality parameters and benchmarks that you set for your business and industry. The Resolv Quality Control Module has been designed to track quality control at the Purchasing Module, Production Module and for Inventory Transfers. It will also track quality control during stock movements like Good Receipt, Good Issue and Sales Returns.

Developed specifically for SAP Business One, Resolv Quality Control seamlessly lives within your SAP Business One system. Users have access to a robust QC system without having to learn a new system or switch programs to access this vital information.

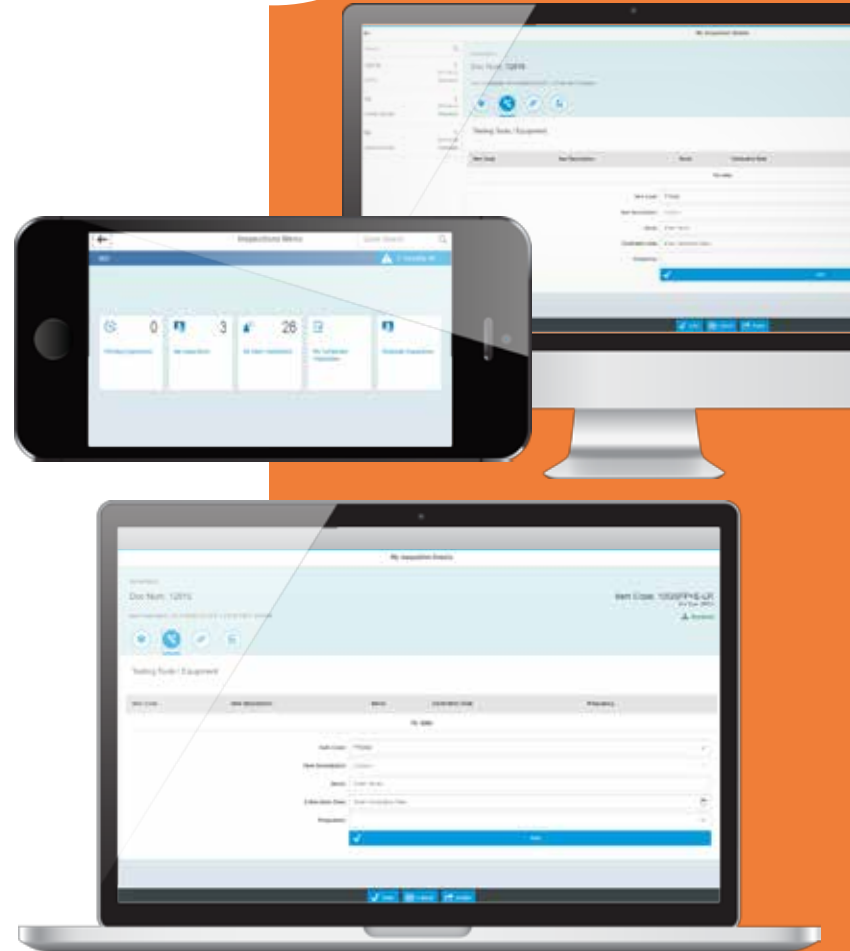


Resolv Mobile Quality Control gives you the same functionalities as Resolv Desktop QC, all from a smartphone or tablet. Having the ability to conduct quality control testing tasks on your smart device prices unprecedented flexibility and efficiency to this important process.

Core Features & Functionality

The Resolv Quality Control module allows organizations to setup quality parameters to meet your customer's and industry quality standards. Once quality parameters are set in the Quality Control module, the process of tracking and checking quality becomes standardized. Increased quality becomes increased profits.

- Flexible Parameter Definitions
- Rejection Reasons
- Parameter Mappings
- Testing Tools
- Optional Mobile QC



Resolv Desktop & Mobile



Style

Key Features

Style Entry

- From the sales order, purchase order, inventory transfer and production screens, users can tab into the style entry matrix
- Enter each style/color on a single line, then enter quantities for all desired sizes
- Total quantity and value for each line is shown
- Total quantity for each size is shown
- User configurable tab sequence
- Integration to Resolv Freight Control

Pricing

- See prices for all valid sizes of each style/color
- Instant quote to customer on phone
- Seasonal pricing for early buys

Availability

- See prices for all valid sizes of each style/color
- Instant verification for customer on phone
- Inventory replenishment at SKU level

Detail

- Breakout list of all ordered styles by color and size
- Recap for customer on phone

Order History

- Lists all items previously purchased by customer
- Drill-down to prior orders

Item Check

- Verify that items are available for expected ship date before exiting
- Change delivery date if necessary
(System shows when item is due into stock)

Ideal for Products of Different Styles and Colors

Does your company buy and sell products that come in a variety of styles, sizes and colors? Do your customer service reps need to enter orders quickly while on the phone? Resolv Style provides a quicker, easier way to enter items on sales and purchasing documents by means of a style grid. Each part number and color can be entered on a single line, with all the required sizes.

Users can quickly quote prices, recap the order, verify quantities and check to see if all items are available for shipment – all from a single screen. The order is then transferred into standard SAP Business One sales order document with the click of a button.

As with all Resolv modules, Style is built specifically for SAP Business One, utilizing the advanced technical architecture of the SAP Business One Software Development Kit.

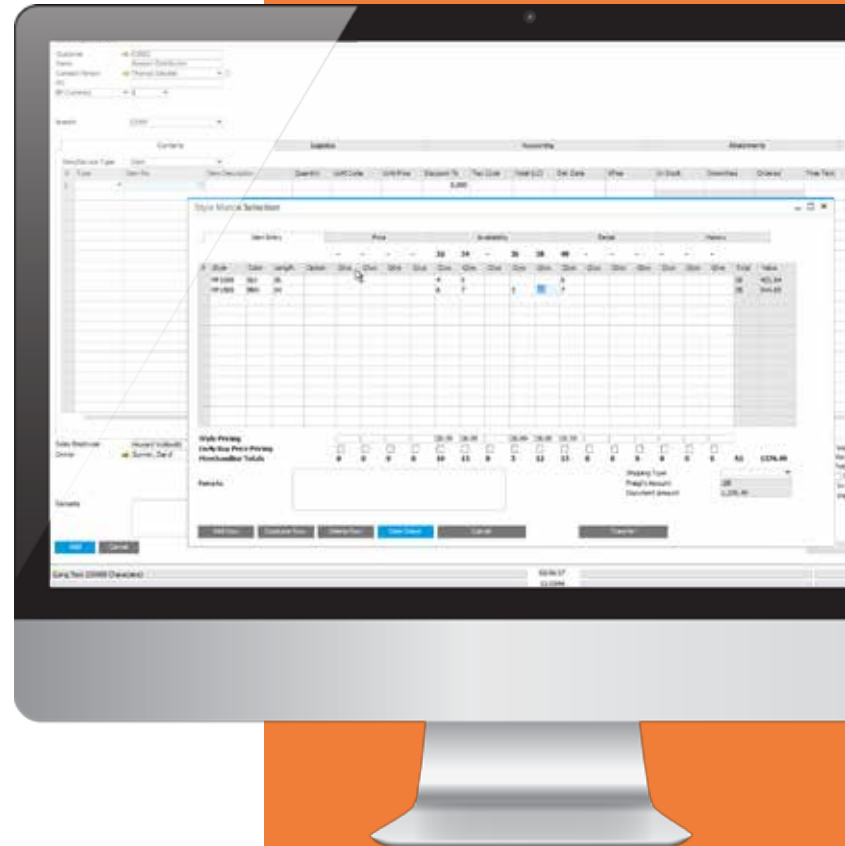
Item Entry		Price				Availability				
#	Style	Color	Length	Option	Q'tys	Q'tys	Q'tys	Q'tys	Q'tys	Q'tys
	MP1500	GRY	30					32	34	3
	MP1500	BLK	30					4	5	5
								3	2	4
Style Pricing								26.99	26.99	
Early Buy Price Pricing								<input type="checkbox"/>	<input type="checkbox"/>	<input type="checkbox"/>
Merchandise Totals								0	0	0



Core Features & Functionality

The Resolv Style module is ideal for companies who manage inventory that is available in different styles, sizes and colors. It enables users to become more efficient with intuitive features and deep functionality at their fingertips, including:

- Unique part number for each style/color/size
- Master style for each style/color
- Enter each part number separately on sales order
- Enter each part number separately on purchase order
- Enter all sizes of each style/color on one line
- View prices for all sizes of all entered items on one screen
- View available quantities for all sizes of entered items on one screen
- Verify delivery dates for all Items of a style
- Duplicate item check
- Merge of duplicate live items on sales order
- Seasonal item pricing



Detail		History									
36	38	40									
Qty	Qty	Qty	Qty	Qty	Qty	Qty	Qty	Qty	Qty	TotM	Value
										12	323.88
	5									14	377.86
5.99	26.99	26.99									
<input checked="" type="checkbox"/>	<input checked="" type="checkbox"/>	<input checked="" type="checkbox"/>	<input type="checkbox"/>	<input type="checkbox"/>	<input type="checkbox"/>	<input type="checkbox"/>	<input type="checkbox"/>	<input type="checkbox"/>	<input type="checkbox"/>	26	701.74
5	0	0	0	0	0	0	0	0	0		



Resolv Desktop



Warehouse Management (HANA)

Key Features

Picking & Packing

- *Sales Orders Pick*
- *Reserve Invoice Pick*
- *Wave Picking*
- *Inventory Transfer Pick*
- *Production Pick*
- *Packing*

Return Material Agreement

- *Customer RMA*
- *Vendor RMA*

Receiving

- *Purchase Orders Receiving*
- *Containers Receiving*
- *Inventory Transfer Receiving*
- *Production Order Receiving*
- *Directed Put away*

Inventory

- *Goods Issue & Receipt*
- *Bulk Bin Transfer*
- *Bin Count*
- *Cycle Count*
- *Physical Count*
- *Cycle Count by Item*
- *1D& 2D Barcode*

Order to Cash

- *Customer*
- *Vendor*
- *Item*
- *WMS*

WMS for SAP Business One, Version for SAP HANA

Resolv WMS is a comprehensive Warehouse Management System that is designed for SAP Business One, version for SAP HANA. Utilizing the SAP Fiori development environment, Resolv WMS exclusively utilizes SAP Business One as its host database.

With SAP HANA as the centralized database platform, for both SAP Business One and Resolv WMS, transactions flow between the 'front office' and the warehouse in real time, with continuous data validation and updates in real time - eliminating errors and driving productivity.

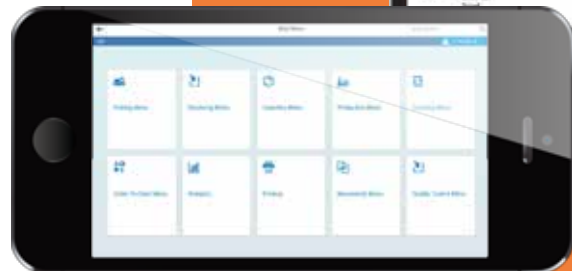
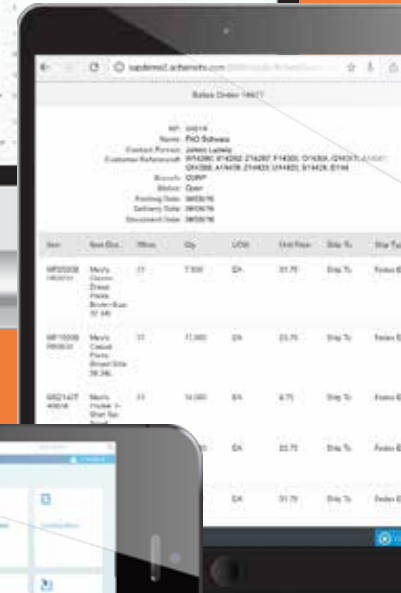
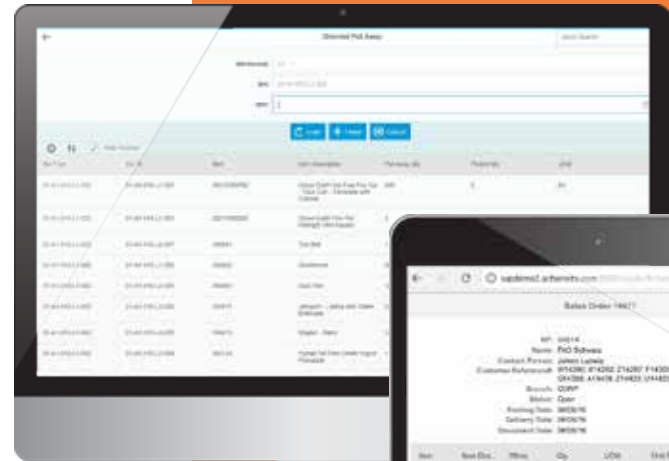
Resolv WMS takes advantage of the latest innovations in mobile technologies, providing the ability to run on industrial strength scanners, as well as popular handheld devices such as tablets and smartphones.



Beyond the Scan

Like traditional WMS applications, one of the key objectives of Resolv WMS is to improve the accuracy and efficiencies of inventory movement - into – within and out of the warehouse through the scanning of barcode labels on inventory items.

That is where the similarities with traditional WMS comes to an end! With Resolv WMS, users can move beyond the scan to improve communications with the front office, with built in messaging and live connection; utilize the camera and attachment feature to link images to associated SAP Business One transactions to assist in areas such as RMA and QC processing. Get answers to questions, by viewing realtime transactional data from SAP Business One, from their mobile WMS device.



Resolv Desktop & Mobile



Warehouse Management (MS-SQL)

Key Benefits

Improve Inventory Management

- *Know what you have, where it is*
- *More timely order fulfillment*
- *More precise delivery dates*
- *Reduce inventory errors*
- *Improve customer service levels*

Enhance Overall Productivity

- *More timely receiving and stocking*
- *More accurate picking and shipping*
- *Identify your most active pickers*
- *Streamline receiving processes*
- *Leverage scanners and tablets*

Improve Margins and Profitability

- *Low total cost of ownership*
- *Short implementation timeframe*
- *Customer compliance with UC128*
- *Real-time database synchronization*

Key Reports

- *Bin Reports*
- *Item Reports*
- *Transaction Reports*
- *Sales Order Shipped by Date*
- *Open Sales Order by Due Date*
- *Order Status Report*
- *Sales Order Shipped by Customer*
- *Open Sales Order by Customer*
- *Production Order Status Report*
- *Purchase Order Status Report*
- *Sales Order Shipped by Item*
- *Intelligence Reports*
- *Warehouse Activity Report*
- *Warehouse Statistics*
- *Warehouse Vendor Activity Report*
- *Employee Productivity Report*
- *Warehouse Customer Activity Report*

Get Ready to Optimize Your Warehouse

Are you ready to optimize operations throughout your entire warehouse? Eliminate lost inventory. Reduce costly picking and shipping errors. Know exactly what you have and where it is. Then you are ready for Resolv™ Warehouse Management Solution.

Resolv Warehouse Management has the tools your company needs to accurately process more orders and move more inventory in less time. As with all Resolv modules, Warehouse Management is built specifically for SAP Business One, utilizing the advanced technical architecture of the SAP Business One Software Development Kit. Achieve Warehouse Management provides efficient, accurate and timely operations.

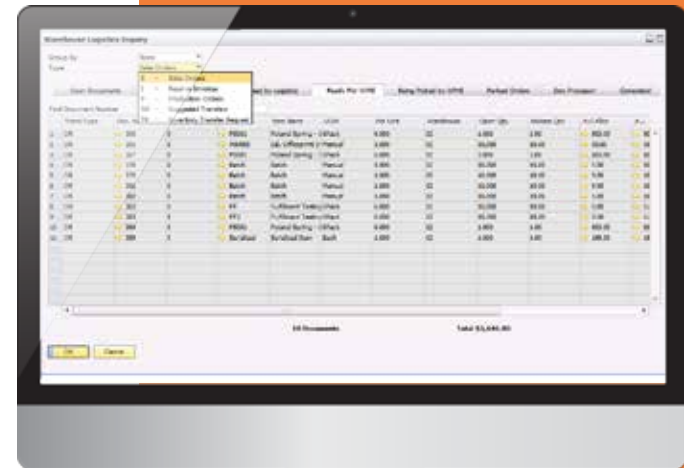
Every function, from receiving and stocking, to picking and shipping, is designed to enable more efficient and accurate processing. The system is designed to let warehouses maximize productivity and retail compliance by providing a process for efficient warehouse operations with Radio Frequency (RF) handheld's, bar codes, and a pick pack ship software package that allows you to implement this process.



Core Features & Functionality

Robust yet easy-to-use, Resolv Warehouse Management streamlines and integrates inventory management through the full operational life-cycle of receiving, put-away, picking, packing and shipping.

- Purchase order receiving and put-away
- Warehouse receiving and put-away
- Sales orders – pick, pack, ship
- Inventory cycle counts
- Bin-to-bin transfers
- Multiple units of measure
- Real-time inventory and management information
- Hand held device integration – print, receive, transfer, ship and more
- UPC and Code 39 label printing
- Container control for container receiving
- Freight control – UPS, USPS, FedEx
- EDI control option – UCC128
- Auto billing options upon shipment



Resolv Desktop & Mobile



North America

340 Belle Terre Road, Building B

Port Jefferson, NY 11777

631.543.3200

Achievelts.com